



Chiswick High Road, London, W4 1PD

Guide Price £250,000

WHITMAN & CO.

SALES · LETTINGS · COMMERCIAL

- Panoramic roof terrace overlooking London
- Fitted kitchen area
- Central location in the heart of Chiswick
- Top floor studio apartment
- Shower room
- No onward chain

Tenure - Leasehold with share of Freehold
 Lease length - 186 Years remaining
 Ground Rent - Peppercorn
 Service Charge - £230 pa
 Local authority - Hounslow
 Council tax - Band B

THE PROPERTY

A unique opportunity to acquire this bright rooftop studio flat with panoramic views across London, ideally located in the heart of Chiswick. This superb apartment comprises a 17'10 living space, a modern compact kitchen, a stylish shower room and a private 360-degree roof terrace overlooking London with a further communal roof terrace area. The flat comes with a long lease and a share in the freehold and lift access. Ideally situated within close proximity of Turnham Green (tube station) and the extensive range of shops, bars and restaurants on Chiswick High Road. No onward chain.

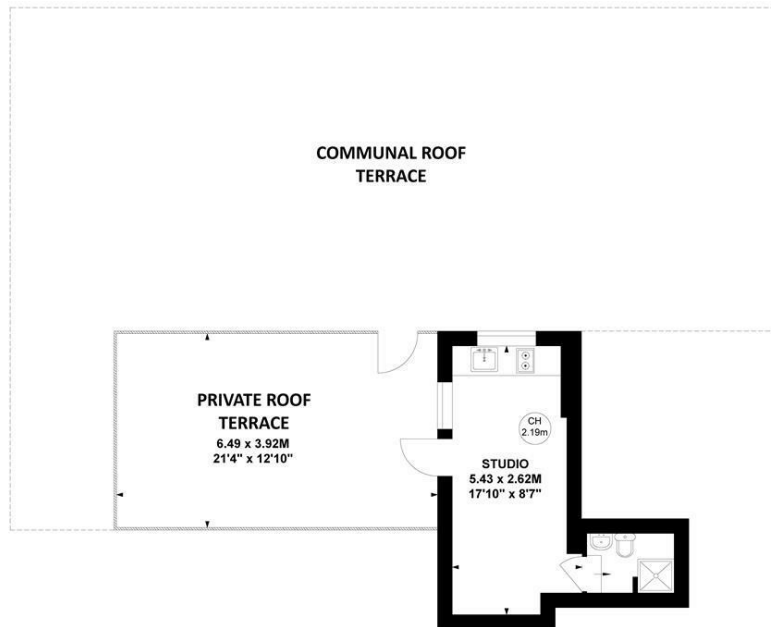
Chiswick, W4

Approximate gross internal area

14.74 sq m / 159 sq ft



Key :
 CH - Ceiling Height



Fifth Floor

Not to scale, for guidance only and must not be relied upon as a statement of fact.
 All measurements and areas are approximate only

SITUATION



5-7 Turnham Green Terrace, Chiswick, London, W4 1RG

Tel 020 8747 8800

E-mail sales@whitmanandco.com

Website www.whitmanandco.com



MISREPRESENTATION ACT 1967

Whitman & Co. for themselves and for the vendors give notice that these particulars do not constitute any part of, an offer of contract. All statements contained in these particulars are made without responsibility on the part of Whitman & Co. or the vendor. None of the statements contained in these particulars is to be relied upon as statements or representations of facts. Any intending purchaser must satisfy himself by inspection or otherwise as to the correctness of each of the statements contained in these particulars. The vendor does not make or give, and neither Whitman & Co. or any person in their employment has any authority to make or give, any representation or warranty whatever in relation to the property.